

NICE Guidance & Pathways

NICE- NG59

Low back pain and sciatica in over 16s: assessment and management

NICE guideline [NG59] Published date: November 2016

Guidance Tools and resources Information for the public Evidence History

Overview

Recommendations

Putting this guideline into practice

Context

Recommendations for research

Guidance

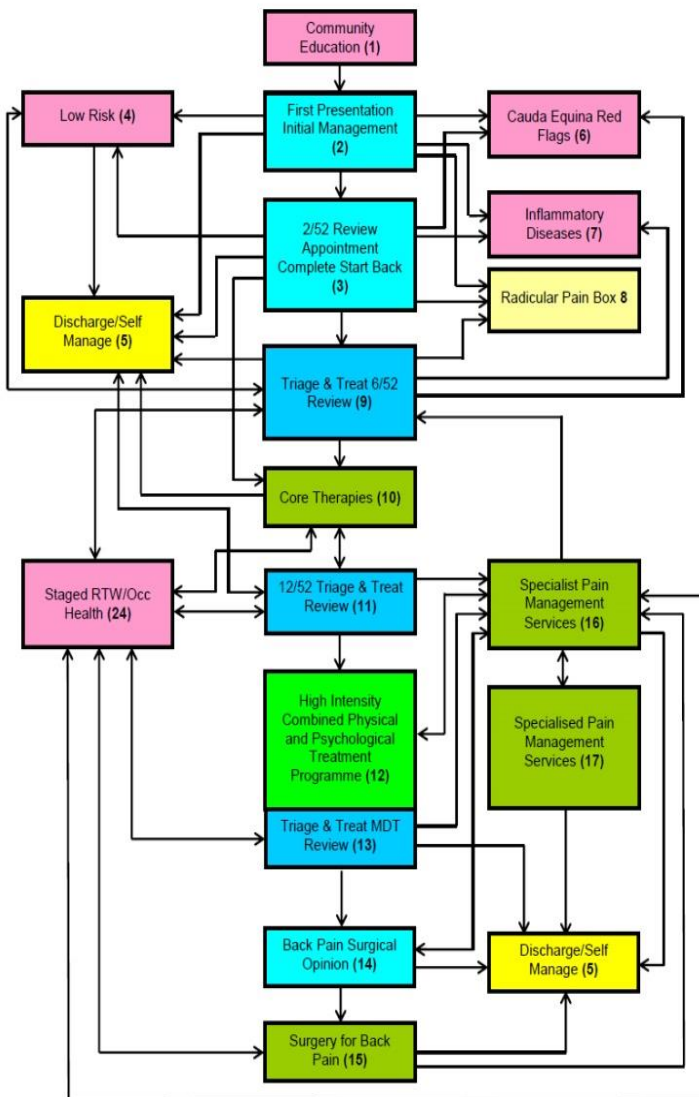
Recommendations

- 1.1 Assessment of low back pain and sciatica
- 1.2 Non-invasive treatments for low back pain and sciatica
- 1.3 Invasive treatments for low back pain and sciatica

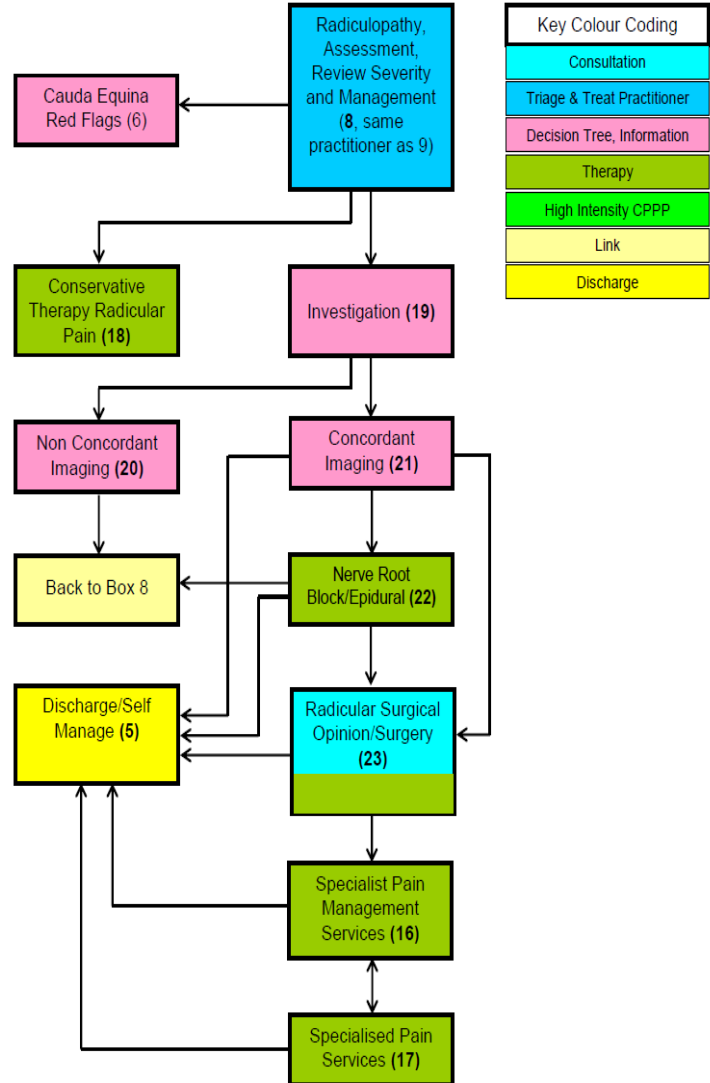
Web link to guidance : <http://bit.ly/2FexebO>

www.sheffieldbackpain.com

National Back & Radicular Pain Pathway



National Radicular Pain Pathway



Results for Triage & Treat Service		
	Sheffield	2 CCG's in NE
Spinal Referrals per yr	10,000	3,300
% Referrals having MRI	12.5%	13.5%
% Referred for surgery	5.7%	6.7%
Financial Savings	£558,000	£775,000

Back Pain Surgery
Does NOT WORK!

